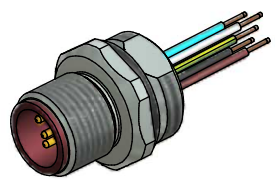


Contact assignment:

- 1 ■ brown
- 2 ■ white
- 3 ■ blue
- 4 ■ black
- 5 ■ green-yellow



Technical specification:

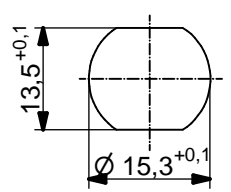
Rated voltage: IEC 61076-2-101	4pos 5pos 250 V 60 V
Current rating: IEC 61076-2-101	4 A at 40°C
Insulation resistance: IEC 60512	>=100 MΩ
Pollution degree: IEC 60664-1	3/2
Degree of protection: IEC 60529	IP 67, in mated condition
Temperature range: IEC 60664-1	+100°C - 30.000h +125°C - 8.000h +150°C - 2.000h
Mating cycles: IEC 60512-9a	>=100

Materials:

Contact:	CuZn
Contact plating:	Nickel, gold plated
Contact carrier:	PBT GF, UL 94
Sealing:	FPM
Socket housing:	CuZn, nickel plated
Grouting:	Polyurethane-resin, UL 94

Installation specification:

recommended torque:	1-1,2 Nm
Conec installation tool:	Torque wrench: 36-000200 Insert across flats 17: 36-000230



Minimum wall thickness 1,5mm,
alternativ panel cut-out d=15,3

Part no:	Description:	Pos	Length L:	Wire:
43-01085	SAL - HT - 12 - FS4 - 0,5 - 9	4	0,5m	Copolymer, UL AWG 24
43-xxxxx	SAL - HT - 12 - FS4 - ... - 9	4	x	
43-01087	SAL - HT - 12 - FS5 - 0,5 - 9	5	0,5m	
43-xxxxx	SAL - HT - 12 - FS5 - ... - 9	5	x	

DO NOT ALTER CAD DRAWING BY HAND Directive 2002/95/EC RoHS compliant	Index: b 02.09.10 fro Ä3696 specification of wires changed, datasheet revised	dim. in mm	title: Male socket M12x1 with wire, frontmounting, HT, PG9							
	tolerance of wire: L ≤ 0,5m: L + 20mm L > 0,5m: L + 4%				date name					
	THIS DRAWING MAY NOT BE COPIED OR REPRODUCED IN ANY WAY, AND MAY NOT BE PASSED ON TO A THIRD PARTY WITHOUT WRITTEN PERMISSION. OWNERSHIP AND COPYRIGHT OF CONEC GmbH	<table border="1" style="font-size: 8px;"> <tr> <td>drawn</td> <td>01.03.07</td> <td>Fromm</td> </tr> <tr> <td>appd.</td> <td>01.03.07</td> <td>Mankopf</td> </tr> </table>	drawn	01.03.07	Fromm	appd.	01.03.07	Mankopf	dwg no: 43K1A329	
	drawn	01.03.07	Fromm							
appd.	01.03.07	Mankopf								
		part no:								